

# Peace Haven

INSPIRED TO SERVE

August 2020 Newsletter Special Edition



## THE NEW PEACE HAVEN



“My love for God continues to unfold; manifested in my love for man, it is expressed through my Christian Science nursing ministry.”

— from a Christian Science nurse





### The Inspiration Behind the Building Process

(From *Peace Haven's New Building* online presentation in June 2020)

by Leslie Gerber, Executive Director

This building project has been an incredible journey, and though it is unfolding at this period in Peace Haven's history, it is the decades long prayerful work and dedicated support of the Christian Science field that brings us to this point.

I would like to share a few highlights from the continual inspiration that is deeply meaningful to us.

- **God has the lead.** "... leaning on the sustaining infinite ..." (*Science and Health*, p. vii) has been taken to new levels as we've trusted divine Love to supply our every need. Whether demonstrating through a \$4 million project cost reduction, finding the perfect temporary location, working with state regulators, or coordinating a move in eight weeks—all while seamlessly taking care of our dear patients and residents—God's handiwork has been a constant. No human ways and means, outlining, or even time and process would enable us to move forward. Divine Mind has been unfolding its purpose in the most complete and natural way, and we can fully trust His handiwork. Even the Architect, General Contractor and Owner's Rep have all acknowledged the hand of God in this project.
- **Man is not a creator, but a discoverer.** We are not creating a building; we are watching divine Love reveal what IS—qualities already present including light, Soul-

filled beauty, principle, harmony, practicality, order, etc. Enlightened and fresh views have been revealed from our deeper study of all aspects of this project from foundation to roof. Watching these cherished qualities being revealed with every job-site visit has been extraordinary.

- **Christian Science nursing is not IN a building.** The building is within Christian Science nursing. The building is a spiritual tool to help support the Christian Science nursing work going on and our fulfillment of the *Christian Science Nurse* by-law as found in the *Church Manual*. It is the heart and soul of caring for each other, divinity embracing humanity in the deepest form of Love meeting every human need. Understanding God's reciprocal law of Love results in the safety and comfort for all who walk through our doors. The translation of the building back into Spirit reveals a place where both the Christian Science nurse and patient are fully supported.

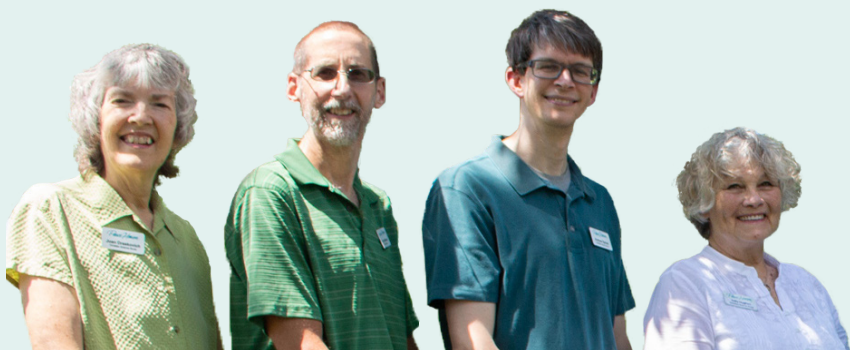
- **Sheltering in place has extraordinary outcomes.** When the global health challenge hit, it was tempting to be discouraged. Through quiet communion with God, "sheltering in place" took on new meaning. Biblical examples showed that each experience resulted in magnificent outcomes and great blessings.

- For starters, consider the trials of Daniel, Noah, Joseph, and Paul. Forced sheltering in place of these devoted servants of God blessed and changed the world.
- Moses in the wilderness received the Ten Commandments.

— continued on page 10

### What the new building means to our Christian Science nurses and staff

"I was part of a tour of the new building last month, and it was pretty profound to be standing on the bare second level looking out. As I looked around, there was a crew working on one of the elevator shafts putting their bricks and mortar in place; another crew working down in the basement in the laundry room area; while another couple of crews were working on different parts of the building. What struck me was that sense of Mind unfolding itself to itself. That the construction workers were nursing our building. Their precision and the understanding of their position and what God



**"What struck me was that sense of Mind unfolding itself to itself. That the construction crews were nursing our building."**

## A year of new beginnings for Christian Science nursing at Peace Haven



### The Decision to Build

*(From Peace Haven's New Building online presentation in June 2020)*

**by Ted Bartelstone,  
President, Peace Haven Board  
of Trustees**

Peace Haven's Trustees work diligently to ensure that our wonderful administrators, Christian Science nurses, and staff have the resources to fulfill its healing mission. Each year, we rely on significant donations to cover our operational budget. Now, we have a special request.

In 2018, Peace Haven's Board of Trustees decided that our Rott Road facility, that had served us for almost 70 years, would be completely replaced. This past winter, in the snow, I was excited to visit our site (along with my four-year-old grandson) as we watched bulldozers begin to take down and remove our existing structure. We could only imagine what would replace it. Now our new building is well on its way. It does not take much imagination to picture what it will be.

The process by which we reached this great step of progress is a demonstration worth mentioning.

Early on, I accompanied our team as we twice appeared before the Sunset Hills Board of Aldermen for preliminary approval of our building plans. At the second meeting, we could have been challenged to respond to questions, objections, and concerns about our project from the City Council and our community neighbors. We were well prepared to provide answers, however the City Board quickly

**“Pilgrim on earth,  
thy home is heaven;  
stranger, thou art the  
guest of God.”**

*(Science and Health 254:31)*

and overwhelmingly voted its approval without expressing a single question or concern.

Initially, we envisioned construction in three phases, which would allow us to remain at Rott Road during the process. Our general contractor originally estimated the construction cost at \$18 million. And then, as initial subcontractor bids came in, we quickly saw that cost increase by about \$4 million, with construction time estimated at almost three years.

I recall the meeting with our contractor's Executive Vice-President when he announced the \$4 million in increased costs. His somber face filled the room with dismay at so significant a difference between the original cost estimate and what seemed like a new reality. He openly worried that the project might be canceled. But, as I looked around the room at our Peace Haven team, I remember immediately seeing a calm recognition on everyone's faces that this

seeming setback was just another opportunity to demonstrate God's infinite supply of right ideas.

Metaphysical work led us to redesign the project to a one-phase, 15- to 18-month construction period. A temporary, off-site operating location was secured and the necessary government approval was obtained in record time. With some redesign decisions, and subcontractor rebids, the \$4 million overage disappeared and we returned to a construction cost virtually identical to the initial budgeted estimate.

Our special Building Fund is currently eighty-five percent funded. So, now is the time when the Christian Science community we serve has the opportunity to contribute the final amount needed to dedicate Peace Haven's new home,

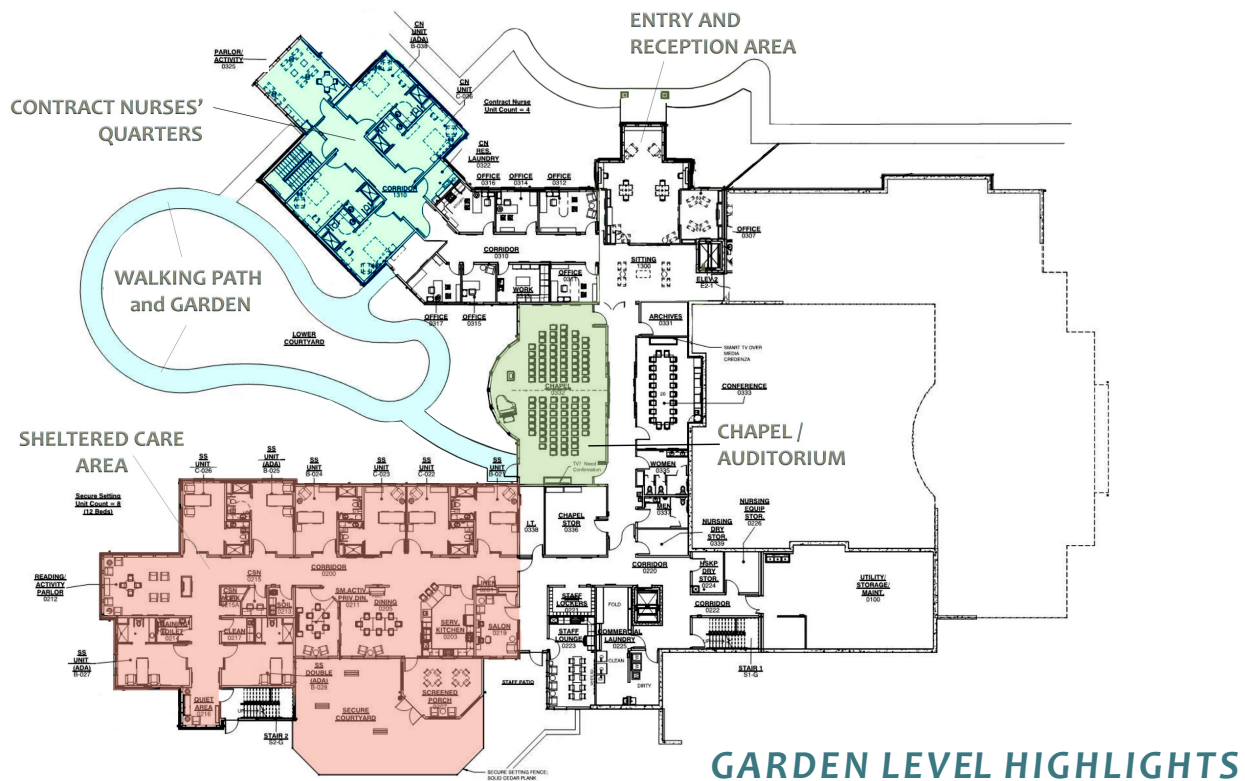
*— continued on page 9*



*was telling them to do, was unfolding for them that, in turn, was going to bless us. Once that building is complete and we move in, we do not think about who laid that fourth brick on the fifth level of the elevator shaft. It is so profound to me that Mind is unfolding all these ideas and each person has their own individual expression of sharing that building with us."*

*— more staff sharing at the bottom of page 6*



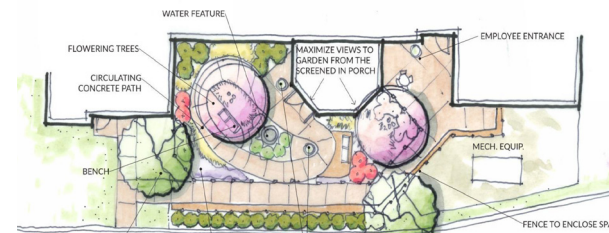


### Sheltered Care Program

*A lovely and comfortable setting for those who need a safe and secure environment.*

Our new facility is designed to support our Christian Science nurses and residents by providing an uplifting and healing environment—secure, safe, beautiful, and harmonious. Peace Haven's Sheltered Care Program is characterized by thoughtful, gentle guidance and personal care with dignity while respecting individual needs.

Our residents will enjoy secured common areas within the Sheltered Care wing, including activity rooms, a screened-in porch, a dining room, a solarium, and an outdoor courtyard in which to take walks. This space is graced with a water fountain, bird feeders, benches, and a garden for guests to enjoy.



Sheltered Care Courtyard

### In planning our new facility, we asked ourselves:

- *How can we provide the best care for our patients? Beauty, comfort, inspiration, and practicality were ideas that inspired its design.*
- *What does it mean to fulfill the healing mission of Christian Science and the Manual of the Mother Church provision for Christian Science nursing?*
- *What should the structure look like within the definition of "CHURCH: The structure of Truth and Love; whatever rests upon and proceeds from divine Principle" (Science and Health 583:12).*
- *How does Peace Haven support the inspiration of our patients, residents, staff, and Christian Science nurses?*
- *What does this structure symbolize in our Christian Science community and broader community?*



## Chapel / Auditorium

*A place to come together and share spiritual inspiration.*



This beautiful venue will allow us to hold our patient and community events comfortably under our own roof with updated technology and equipment. Some of the events will include:

- Christian Science lectures
- Practitioner talks
- Inspirational speakers
- Peace Haven Annual Meeting
- Bible seminars
- Volunteer presentations
- Open House events
- Hymn Sings

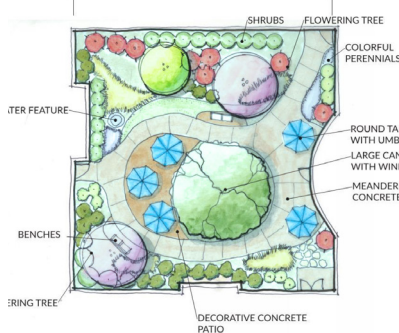
The new Chapel/Auditorium will provide a bright, versatile, and dedicated space to serve our patients, residents, and staff with Christian Science church services and other inspirational programs.

We look forward to sharing many of these uplifting talks and programs. Some will include a call-in service for people who wish to participate by phone from anywhere in the country.

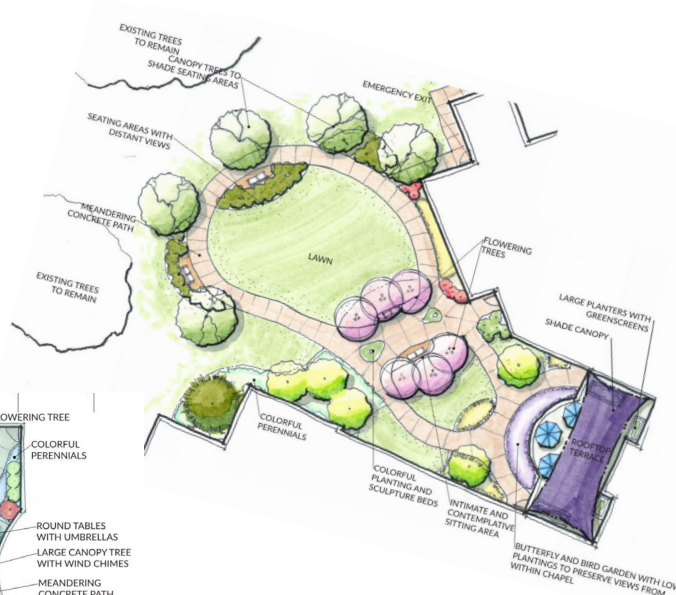
## Landscaping and Outdoor Gardens

*Soul-filled beauty is cherished in every corner of our gardens and courtyards.*

The natural beauty of the outdoors can provide fresh inspiration to those seeking healing. Peace Haven's courtyards and gardens are designed to be outdoor havens of peace and harmony that blend naturally with the indoor amenities of the facility. These lovely outdoor areas add a beautiful dimension to the daily experience of our guests and visitors, building on the richness of the home-like atmosphere they experience inside.



Interior Courtyard



Meandering Walking Path,  
Conversation Area, and  
Rooftop Patio

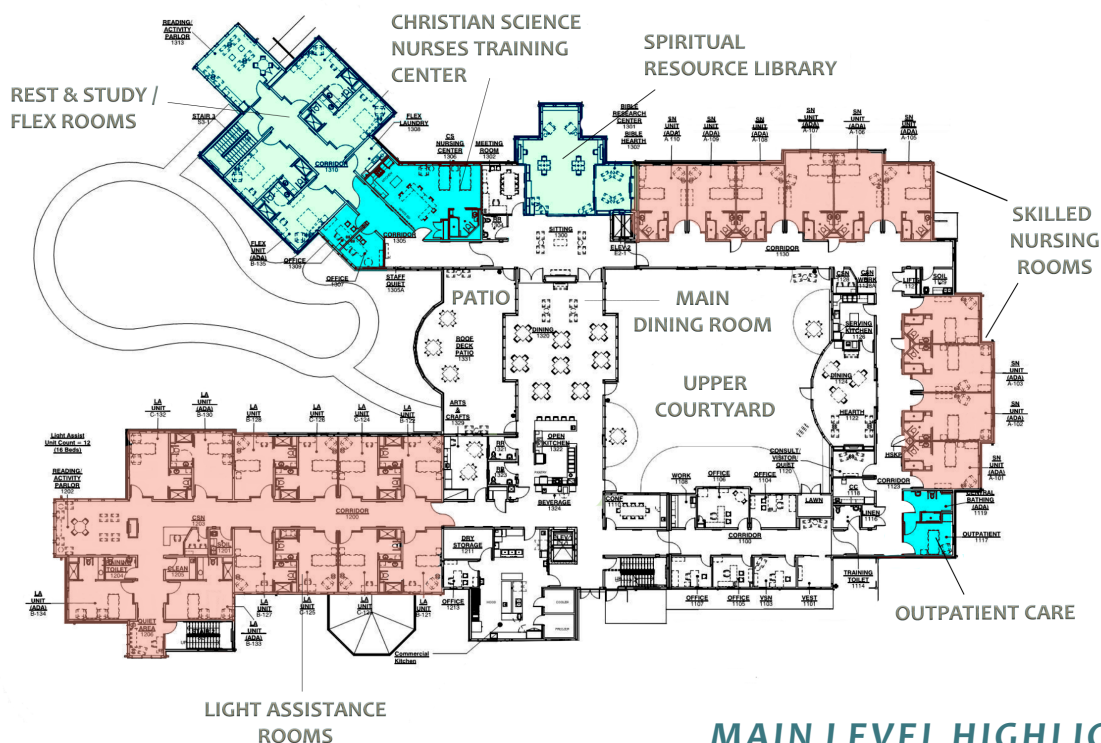
**We determined that a Christian Science care facility embodies what Mrs. Eddy describes as, "... divinity embracing humanity in Life and its demonstration."**

*(Science and Health, p. 561):*

- They reflect the vibrancy, relevance, and effectiveness of Christian Science healing.
- They are a visible manifestation of the love Christian Scientists have for each other.
- They are the outward expression of Christian Scientists everywhere cherishing Christ healing.



## Special enhancements of the main floor



### MAIN LEVEL HIGHLIGHTS

## Christian Science Nurses Training Center

*We are grateful to prepare Christian Science nurses by providing a sound, spiritual foundation built upon our Church Manual by-law “Christian Science Nurse.”*



In fulfilling Peace Haven’s healing mission, we are dedicated to training and nurturing Christian Science nurses. We are committed to letting the art of Christian Science nursing be seen in the manner in which we serve—expressed in tender, Christ-like compassion, reverence, and healing.

Our new building design includes a dedicated training classroom where Christian Science Nursing Arts accredited courses are taught. Our goal is to develop well-trained, fully-mentored Christian Science nurses that will support the entire movement.

### What our new building means to our Christian Science nurses and staff (continued sharing from page 3)

*"What I love about the new building is the newness and freshness, the beauty and the grace of seamless functionality. All these things will improve and support the patients while they are here focused on God and healing."*

*"I believe that the new facility is being planned and designed in a way that is to nurture the patient and the Christian Science nurse to provide all of the needed spaces and equipment so that we can do our job prayerfully, yet skillfully."*



## Enhanced Patient and Resident Rooms

*These spaces surround our guests in beautiful, safe, and comfortable settings for healing and growth.*

Providing the best care for our patients and residents in an atmosphere of love includes a practical setting with home-like qualities. Our new building's guest rooms are designed to be filled with light and beauty—creating an undisturbed, safe environment for spiritual uplift and healing.

Our new rooms are spacious with easy accessibility, new furnishings, and modern technology, including a five-channel sound system for inspirational program options. The resident and patient rooms are close to beautiful outdoor spaces, dining rooms, quiet study rooms, the Spiritual Resource Library, and Chapel/Auditorium.



Peace Haven offers a full-spectrum of inspiring programs for our patients and residents.

## Spiritual Resource Library

*A dedicated space for spiritual enrichment for our patients, residents, and Christian Science community.*



Our new building provides a place where patients, residents, Christian Science nurses, staff, and visitors can study, find spiritual refreshment, take advantage of individual research, and participate in inspirational programs.

### Reference Library

Come and explore Bible and Christian Science resource materials, historical and biographical publications, online study sources, and more.

### Rest and Study

Christian Science community members near and far are welcome to stay with us in our Rest and Study rooms, and find that quiet mental space that “Lifts our hearts to revelation . . .” (Christian Science Hymnal, Hymn 85)

### Inspirational Bible Study

We offer a weekly inspirational Bible program that includes Bible research and insights on citations from the weekly Christian Science Bible Lesson. Participants can join us at Peace Haven or via call-in options.

*"The comforter is ever present and will reveal how it is to be expressed, witnessed, lived, moment by moment. This beautiful promise is the open fount that includes in its waters integrity, purpose, vitality, freshness, rejuvenation. It cannot be exhausted but is ever flowing forth for everyone to flourish here at Peace Haven."*



### *What are you saving from the original building?*



We have kept some distinguishing features from the original 1917 summer home. The much-loved, iconic green entry doors are being incorporated in our new Spiritual Resource Library; the original stained-glass windows are being reused; and some of the original shutters are being repurposed in our new facility.

### *Can you share anything about the design process and how the Christian Science nurses were involved with it?*

The design process began with the nurses and staff prayerfully listening for God's direction. We wanted to first understand the qualities that needed to be expressed to support Mrs. Eddy's vision of Christian Science nursing. These qualities became the guiding light for the team we formed to work with the architect. This Core Operations team consisted of representatives from each department—Christian Science Nursing, Christian Science Nurses Training, Maintenance, Hospitality, Operations, and Administration. We sought additional design input from our Christian Science nursing staff regarding the layout of various areas that support their day-to-day work with patients. The design process has been exciting and invigorating, and we continue to pray and listen every step of the way for God's guidance.

### *What new equipment will be available to support the Christian Science nurses and patients?*

A new nurse call system and an improved general communications system have been incorporated into the new facility. Christian Science nurses will also carry phones with new features allowing them to see who is knocking at the front door at night, while also giving them the ability to take calls and better communicate with each other. Patient rooms will be equipped with individual temperature controls and multi-channel sound systems that give patients 24-hour access to The Mother Church services, recorded hymns and lectures, the weekly Christian Science Bible Lesson, and more.

### *When do you expect the new facility to be completed?*

We hope to open on March 1, 2021. Our final opening date will be decided based on many different elements. We have been guided at every step and have experienced no delays. It has been a wonderful demonstration. Peace Haven has very dedicated Christian Science practitioners, Christian Science nurses, staff, and Christian Science community members all supporting metaphysically our healing ministry and this building project. We are extremely grateful for this prayerful support.

### *Where are patients being taken care of while the construction is underway?*

Patients are temporarily being cared for in our own dedicated space at Mason Pointe in Chesterfield, MO. This temporary facility fits Peace Haven's needs perfectly and the transition to Mason Pointe in Fall 2019 was seamless.

### *Where does Peace Haven stand in its fundraising efforts for the new facility?*

Peace Haven is thankful to have already secured funding for eighty-five percent of the construction costs for the new facility. Our gratitude overflows for this abundance. But we still have some distance to go before we're fully funded. Every additional contribution is an affirmation that Christian Science care is legitimate and effective.

**"Every additional contribution is an affirmation that Christian Science care is legitimate and effective."**

### *Can Peace Haven accept donations of stock?*

Yes, stock transfers are welcome and can be very advantageous to Peace Haven and the donor. Peace Haven benefits from the immediate liquidation of the stock, and the donor gets to deduct the full value of the stock without having to pay taxes on the sale. There are other ways to contribute as well. If you have questions, please contact:

Brian Webster, Director of Development  
314.965.3833 (office)

303.881.2573 (cell)

[Brian.Webster@peacehavenassociation.org](mailto:Brian.Webster@peacehavenassociation.org)

**Thank you for joining us  
in the next chapter  
of the unfolding good  
of Peace Haven!**





*We invite you to explore with us  
Peace Haven's  
2020 Metaphysical Theme*

### Built on the Rock



**If the Lord build not the house  
They that labor build in vain;  
Father, may our corner stone  
Stand foursquare, without a stain.**

**Make our planting timely, true,  
Governed by a power benign;  
Nourish by a heavenly dew  
All the branches and the vine.**

**Fruitful shall our tillage be,  
Known the work of perfect Mind,  
Leaves be gathered from the tree  
For the healing of mankind.**

**Cleansing men of fear and hate,  
Lifting hope above the sod,  
Truth will summon, soon or late,  
All the earth to worship God.**

*Christian Science Hymnal, Hymn 141*



### **ROCK.** Spiritual foundation; Truth.

*(Science and Health with Key to the Scriptures,  
Mary Baker Eddy, 593:18)*

Please join us in our metaphysical work supporting Christian Science nursing as well as our new facility. Each month, we are studying one of the 12 foundation stones found in the Holy City (see Rev. 21) and correlating it with an aspect of our new building project. There are monthly study packets found on our website that include many references from the Bible, *Science and Health*, and other writings by Mary Baker Eddy.

AUGUST

#### **BUILDING: ROOF**

*Foundation stone: Amethyst –  
love, spiritual power*



JULY

#### **BUILDING: WINDOWS**

*Foundation stone: Sapphire –  
sincerity, constancy, truth*



JUNE

#### **BUILDING: DOORS AND GATES**

*Foundation stone: Sardius –  
courage, wisdom*



### **Ted Bartelstone** (continued from page 3)

approximately \$2.5 million. As our team reaches out to those supporting the great progress of Christian Science nursing, how wonderful it will be to demonstrate wide and deep support from all of you. Please know that we so appreciate receiving whatever amount is meaningful to you. It is all meaningful to us.

While we are deeply grateful for the building that will be our new home, we recognize that it is the tireless work of our

dedicated Christian Science nurses and administrative and other staff that really constitutes Peace Haven's "home." It is for these efforts that we seek your support. With that, we can secure another 70-plus years of Peace Haven's commitment to Christian Science nursing and healing. In thinking of the idea of "home" and the "guests" we will serve there, we are reminded of Mrs. Eddy's words, "Pilgrim on earth, thy home is heaven; stranger, thou art the guest of God" (*Science and Health* 254:31).

## Christian Science Nursing

— *is the heart and soul of caring for each other, embracing humanity in the deepest form of Love meeting every human need.*

Do you have a desire to serve the Christian Science movement? Consider becoming a Christian Science nurse! The foundation for Christian Science nursing is securely established in the Bible and *Science and Health with Key to the Scriptures* by our Leader, Mary Baker Eddy, and its standard is set forth in the *Church Manual By-law* (Article VIII, Sect. 31).

Christian Science nursing supports the mission of healing. We encourage students of Christian Science to serve as a healing presence to those needing practical care.

To learn more, please contact Brooke Enoch, Director of Christian Science Nurses Training, at [brooke@peacehavenassociation.org](mailto:brooke@peacehavenassociation.org), or at 314.965.3833, ext. 741104

## Christian Science Nurses Training

Peace Haven is dedicated to training and mentoring those seeking to become Christian Science nurses. We are committed to the Christian Science Nursing Arts training program which integrates ethics, sound judgment, and practical skills in support of loving care.



**Christian Science Nursing Arts courses** will be offered in Fall 2020 and Spring 2021. Please contact Peace Haven for more details.

**Comfort's Art one-day seminars.** Are you interested in learning how to take better care of family, friends, and church members in times of special need? Or want to explore the possibility of becoming a Christian Science nurse? Our workshops explore the spiritual basis of Christian Science nursing and basic instruction with mobility aids, assisting others, nourishment, and giving comfort.

## New Website Launched



**Find us at – [www.phcsn.org](http://www.phcsn.org)**

We are excited to share that our new website is launched. Many people came together to complete this project, and we are deeply grateful for their time and dedicated work. This new website incorporates many new features and a wealth of information about Peace Haven and our services. Visit us online to learn more about:

- Christian Science Nursing Services
- Christian Science Nurses Training
- Inspirational articles and recordings
- Admission and Financial Assistance
- Employment Opportunities
- Events Calendar
- New building updates along with current webcam photos of daily progress

## Leslie Gerber (continued from page 2)

- o The Disciple John, banished to the most desolate island of Patmos, received the vision of the Holy City, New Jerusalem.
- o And the ultimate sheltering in place—Jesus in the tomb. He proved through his reappearance that, “There is no life, truth, intelligence, nor substance in matter.” That “All is infinite Mind and its infinite manifestation . . .” (*Science and Health*, p. 468)
- o Even Mary Baker Eddy—her three years in the attic apartment brought about the revelation of divine Science.

This spiritual sense of sheltering in place perfectly expresses the experience of walking into a Christian Science care

facility. You come in under the shadow of the Almighty, safely sheltered, defended, protected.

It is no coincidence that this building project is unfolding at this exact time. This building symbolizes to our broader community that Christian Science is active, vibrant, relevant, and effective. It is a symbol of how we support and take care of each other in the most loving and practical way. How we deeply value the *Christian Science Nurse* by-law in our individual healing practice as well as in the healing ministry of those dedicated workers who have enlisted as Christian Science nurses.

Like the Bible stories show, the epoch challenges of today are ushering in something spectacular. The Bible promises in Exodus 23, “Behold I send an Angel before thee, to keep thee in the way, and to bring thee into the place which I have prepared.” It truly is a privilege to be part of this work.



## Are you exploring career options?

### *Consider working at Peace Haven Association*

Peace Haven is expanding and we have great career opportunities. We would love to explore the possibilities with you.

- Leadership positions in our Christian Science Nursing department, Christian Science Nurses Training department, and Visiting Christian Science Nurse services.
- Entry level positions are also available with flexible schedules.

*Join us in our love of  
Christian Science nursing!*

For more details, please call 314.965.3833, ext. 741118,  
visit our website at  
[www.peacehavenassociation.org/Home/employment/](http://www.peacehavenassociation.org/Home/employment/)  
or email [HR@peacehavenassociation.org](mailto:HR@peacehavenassociation.org)

## Mark your calendar!

**August 30, 2020 — 2:00 p.m. (Central)**

*Speaker: Chestnut Booth, C.S.*

*Title: "Sweet Immunity" (Misc. 320: 9-16)*

*Inspirational online presentation*

**November 14, 2020 — 3:00 p.m. (Central)**

**Peace Haven's 2020 Annual Meeting**

*Keynote Speaker: Dr. Tom Fuller*

*You're invited each week!*

Listen to insights on Bible citations from the Christian Science Bible Lesson with Kathy Merrill, Peace Haven's Manager of Inspirational Programs.

**For more information, please visit**  
[www.phcsn.org/Events](http://www.phcsn.org/Events)

## Peace Haven Board of Trustees Update

*We are delighted to welcome the newest  
members of our Board of Trustees*



POSIE  
CLEVINGER, C.S.



GLEN H.  
COPE



HELEN  
HOCKLEY, C.S.



ELEESA  
PEREZ



PENNY  
SWANK, C.S.



MARILYN  
WALLACE, C.S.

## Peace Haven 2020 Board of Trustees

Ted Bartelstone, President  
Cushie Switzer, First Vice-President  
Beverly Greenley, Second Vice-President  
Bruce Butterfield, Treasurer  
Marilyn Wallace, C.S., Secretary  
Mark Anderson  
Rob Ball  
Posie Clevenger, C.S.  
Glen H. Cope  
Helen Hockley, C.S.  
Eleesa Perez  
Brad Stock  
Penny Swank, C.S.

### Administration

Leslie Gerber, Executive Director  
Valerie Hickam, Director of Operations  
Cathy Farrell, Director of Christian Science Nursing  
Brooke Enoch, Director of Christian Science Nurses Training

## A Special Thank You!



SUE ELLEN  
COUGHTRY



TOM  
FULLER



JACKIE  
IVES



DEBBIE  
MCNEIL

Peace Haven is deeply grateful to our wonderful outgoing Board members who have generously given of their time and love in helping our Christian Science nurses and staff serve our Christian Science community!



August 2020 Newsletter

Thank you for being a part  
of the unfolding progress  
of Peace Haven.



*We greatly appreciate  
your loving support!*

*Peace Haven is grateful for your  
continued support of our*

**General Operating Fund  
and our  
New Building Fund**



### *Ways to Give —*

**Online:** Make a secure gift at [www.phcsn.org/donate](http://www.phcsn.org/donate)

**Mail:** Peace Haven Association  
P.O. Box 6755,  
Chesterfield, MO 63006

*Note: Please indicate in the memo portion of your check  
what fund to apply your gift to.*

**Other gift types:** Please contact Brian Webster, Director of  
Development at 303.881.2573 (cell) or 314.965.3833 (office);  
or [Brian.Webster@PeaceHavenAssociation.org](mailto:Brian.Webster@PeaceHavenAssociation.org)